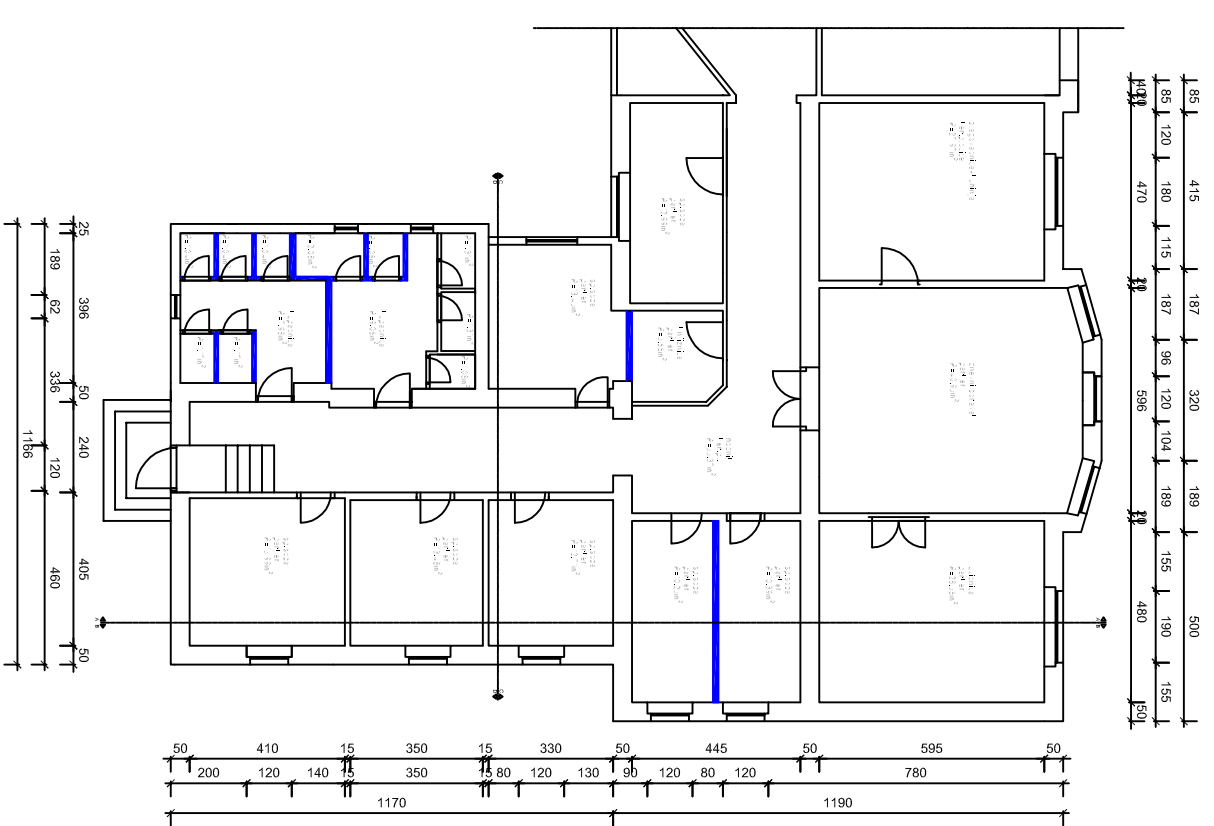
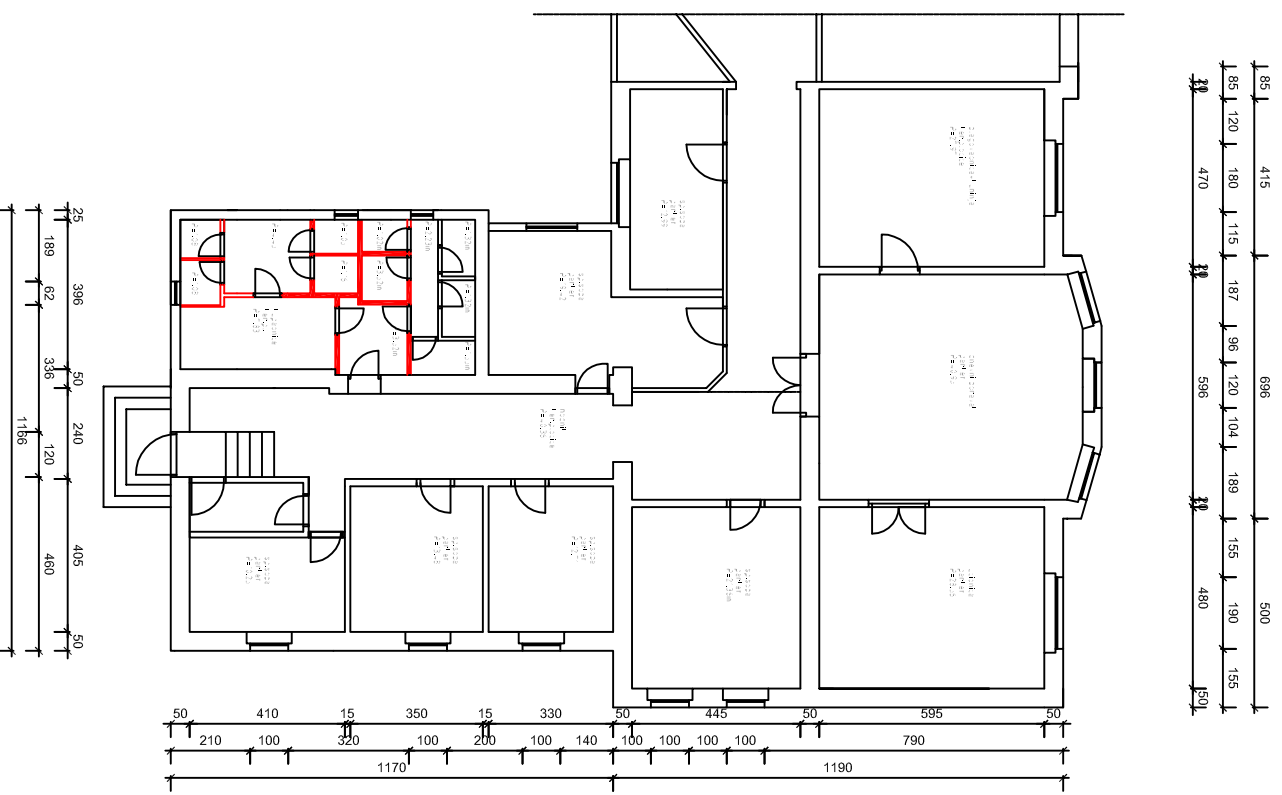
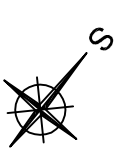


TLOCRT PRIZEMLJA - POSTOJEĆE STANJE

TLOCRT PRIZEMLJA - NOVOPROJEKTIRANO STANJE



LEGENDA

- SRUŠENI ZIDOV I
- NOVI ZIDOV I

ŠKOLA PRIMIJENJENE UMJETNOSTI I DIZAJNA OSJUEK			
Projekt:	Dječji dom	Mjerilo:	1:200
Predmet:	Projektiranje interijera	Razred:	4.a
Učenk:	Ana Matijević	Šk.god.:	2016./2017.
Mentor:	Željka Buturac, d.i.a.	List:	2